

THE GREATER BRIGHTON PARTNERSHIP LAND & PROPERTY ASSET LIST & INTERACTIVE ASSET MAP

GUIDANCE NOTES & USER GUIDE

VERSION 1.2

Produced by Brighton & Hove City Council
on behalf of the Greater Brighton Partnership
December 2016



THE GREATER BRIGHTON PARTNERSHIP LAND & PROPERTY ASSET and ATTRIBUTES LIST

The Greater Brighton Partnership

The Greater Brighton Partnership is formed from public sector organisations which are based or operating in the local government administrative areas of Adur District Council, Worthing Borough Council, Lewes District Council, Mid Sussex District Council and the City of Brighton & Hove. The partnership is made up of these councils together with:

- Brighton & Hove Clinical Commissioning Group
- Coastal West Sussex Clinical Commissioning Group
- Brighton & Sussex University Hospitals NHS Trust
- Sussex Community NHS Foundation Trust
- Sussex Partnership NHS Foundation Trust
- South East Coast Ambulance Service
- Sussex Police
- East Sussex Fire & Rescue
- University of Brighton
- University of Sussex
- City College
- Northbrook College
- Worthing College
- Sussex Downs College
- Plumpton College

The Greater Brighton Partnership Property & Land Data

The Greater Brighton Partnership has published a full list of their collective land & property assets which is available to download using the following link:

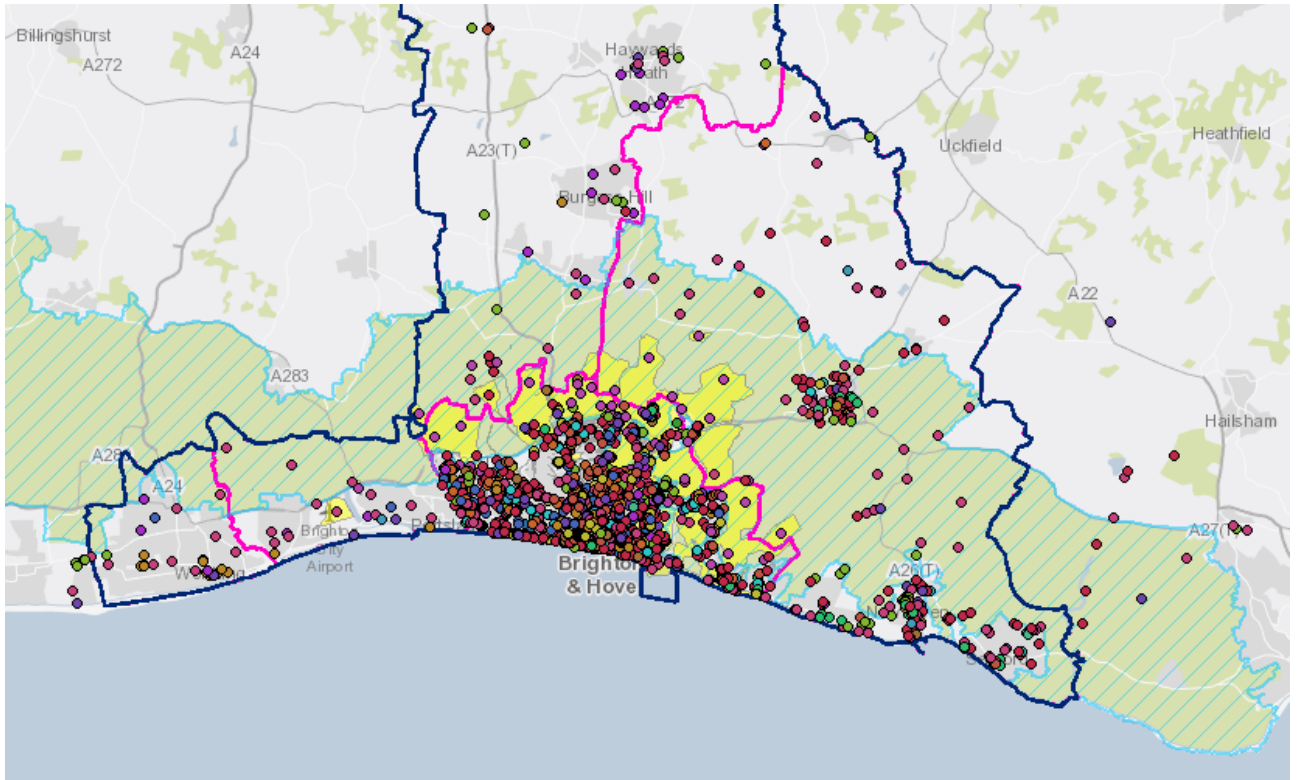
<http://www.greaterbrighton.com/one-public-estate/>

The asset list and interactive map represent an extract from each partner's asset register and is provided for general information only. Specific queries relating to the listed assets should be sent to the respective partner's estates team.

Please note that the published asset list and interactive map are not live or directly linked to the partners' definitive registers and therefore represent a snapshot in time as at December 2016.

Using the Interactive Map

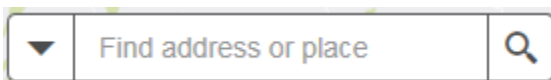
Clicking on the Greater Brighton Interactive Map link opens up the following page showing an overview of the partnerships collective assets represented by coloured dots on the map.



Select these icons to zoom in or out to specific areas or assets shown on the map.



Select this icon to reset the map to the default zoom level.



Enter a street name and post town to zoom to a particular street location.



Select the 'Legend' icon to see the categories of asset represented by the coloured dots.

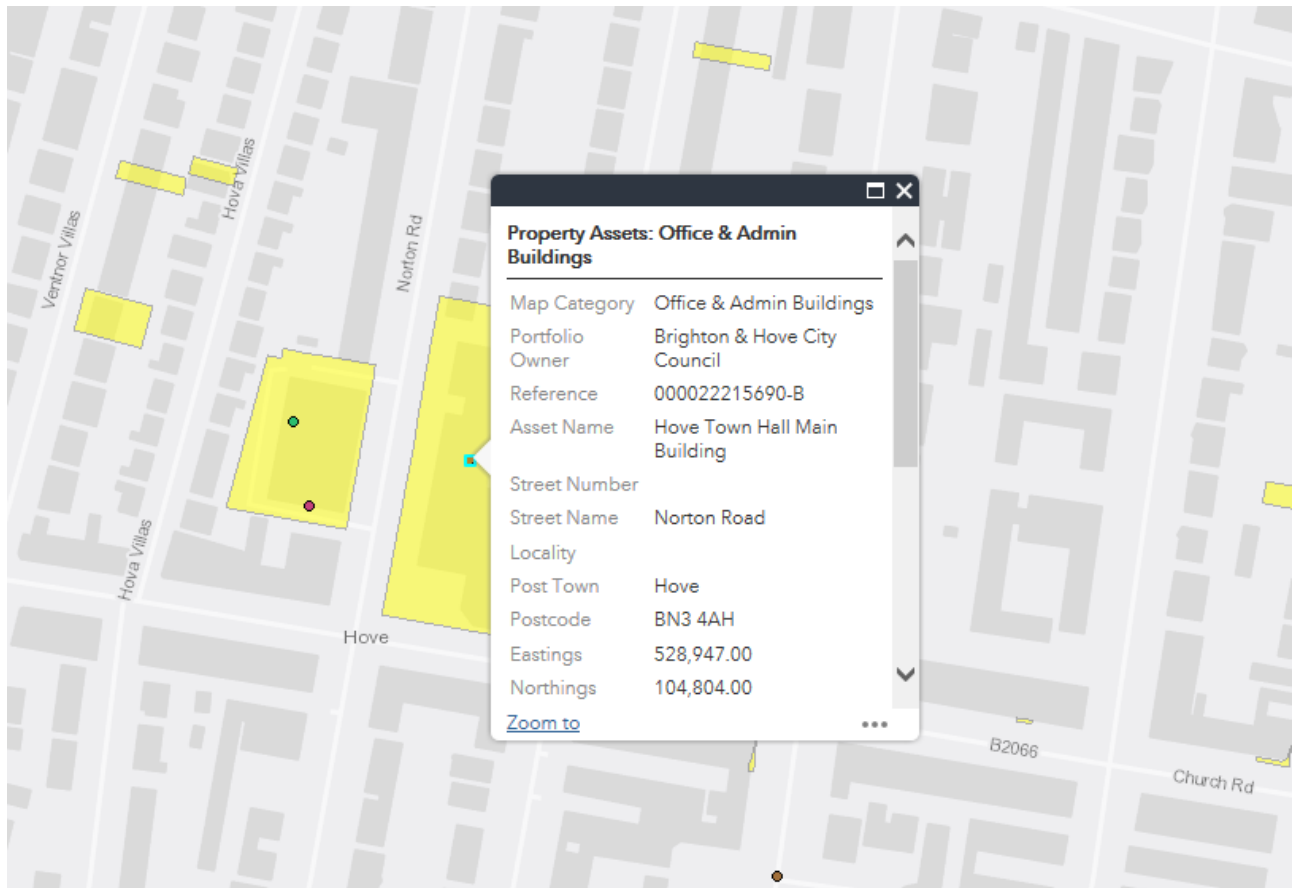


Select the 'Layer' icon to view particular categories of assets or to switch the boundary lines on or off

Additional features may be added to the interactive map in the future and your feedback and suggestions are welcome (please see below for our contact details).

Viewing the Interactive Map

The map is fully zoomable using your mouse wheel or the zoom icons described above. Clicking once in the centre of an asset icon will open the attributes window for that particular property as indicated below:



The attributes listed on the interactive map are explained below. Note that not all attributes are available for each asset or for each partner.

Asset List

The information shown on the interactive map is also available in an Excel or CSV version from the web page detailed above.

Comments & Feedback

The Asset Management Team of Brighton & Hove City Council welcome comments and feedback on the published property attribute data and this guidance note on behalf of the Greater Brighton Partnership. Please forward any comments to amp@brighton-hove.gov.uk.

Explanatory notes to the Land & Property Asset Attributes

Column	Heading	Description & Comment
A	Map Category	The general use category of the asset used to differentiate between individual asset types and searchable through the key on our Interactive Map.
B	Portfolio Owner	The owner or body responsible for the asset. This covers various public sector partner bodies operating in the city as well as the council itself.
C	Map Reference	A unique reference to link the asset list to the map entries.
D	Asset Name	The common name for the asset as used by the council and contained in our property terrier. Some assets may be known by more than one common name and in these instances it is expected that the address information below will be sufficient to identify the asset. If there is any doubt about a specific building please contact us using the e-mail address provided above and quoting the relevant UPRN.
E	Street Number	The street number or name of the property where it exists.
F	Street Name	Postal road address. In some instances, such as land assets, the land may be bordered or accessed by more than one road. In these cases the major road is used where possible.
G	Sub-Area	Suburb or recognised sub-area of the city where appropriate.
H	Postal Town	Usually Brighton, Hove or Portslade.
I	Postcode	In some instances, such as land assets, there is no officially allocated postcode. In these cases the postcode has been used for the nearest or an adjacent property wherever possible.
J	Asset Description	A brief description of the current asset use.
K	Tenure	This will usually be either: 'Freehold' where the council owns the asset or 'Leasehold' where the council rents or leases the asset which is owned by a third party Other tenures may be shown where the council neither owns nor formally leases the asset.
L	LA Area	The local authority area where the asset is sited.
M	Floor Area	Gross Internal Floor Area (GIA) is measured in m ² in accordance with the RICS Code of Measuring Practice. GIAs are only stated for buildings where the council has this information. The source of GIA data varies and may be estimated, site measured or calculated from electronic CAD plans.
N	Land Area	The approximate area of the land asset in Hectares (where known)
O	Asset Type	This will be either: 'Land & Building' usually where the authority owns the building freehold 'Building Only' usually where the authority does not own the freehold and therefore the land asset is excluded. 'Land Only' usually a land asset with no buildings on it.
P	Holders Reference	This is an additional reference used by the council to identify an 'asset site'. For example in the case of large sites such as schools these will have a single Unique Asset ID to cover the whole school site even though this may comprise multiple UPRNs used to identify individual buildings within the site.

Column	Heading	Description & Comment
Q	UPRN	This is the unique reference used by the council to identify the specific asset. Each building and each land asset is allocated a unique reference number which should be quoted in the event of any queries on the list.
R	Location Co-ordinates – Eastings	Geo-coding is in accordance with ISO 6709 Standard Representation for Geographic Point Location By Co-ordinates. This is usually the centre point of the asset location. In the case of larger land assets this may be some distance from the furthest boundary.
S	Location Co-ordinates - Northings	